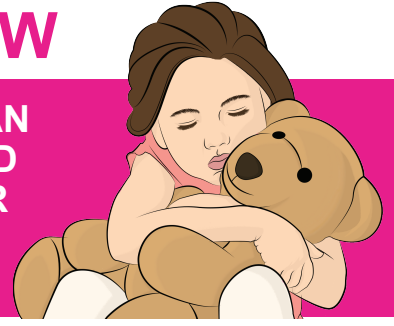


CHILD SEXUAL ABUSE EARLY WARNING

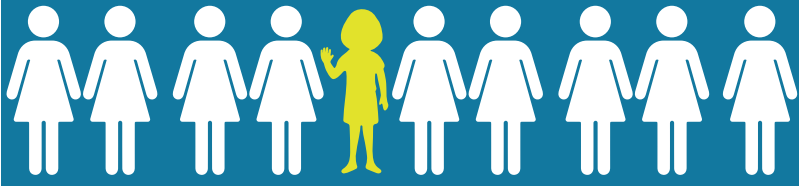
SIGNS ALL PARENTS AND TEACHERS MUST KNOW



CHILDREN CAN'T SPEAK UP ABOUT SEXUAL ABUSE. ANY ONE SIGN DOESN'T MEAN THAT A CHILD WAS, OR IS BEING ABUSED, BUT IF YOU SEE MULTIPLE SIGNS / RED FLAGS YOU MUST ASK QUESTIONS. PARENTS & TEACHERS NEED TO REMEMBER ABUSE HAPPENS TO BOTH BOYS & GIRLS & SIGNS CAN BE VERY SUBTLE THEREFORE IT IS VITAL TO RECORD / LOG CAUSES OF CONCERN.



IF YOU ARE IN DOUBT, REPORT TO BELOW HELPLINES TO SEEK PROFESSIONAL HELP

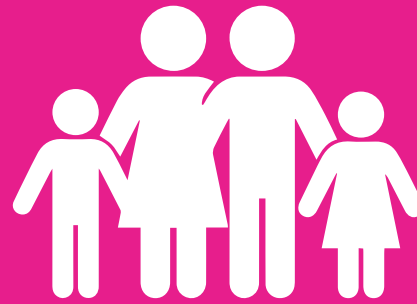


1 in 10

ONE in TEN children experience sexual abuse before the age of 16. That is the Equivalent of THREE CHILDREN IN EVERY CLASSROOM

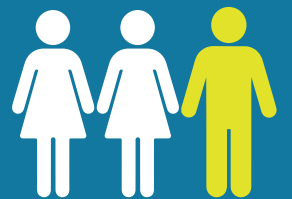
OVER
90%
OF CHILD
ABUSE

IS CARRIED OUT BY SOMEONE YOU KNOW OR KNOWN TO THE FAMILY



1 in 3

CHILDREN NEVER DISCLOSE THEIR ABUSE



1 **PHYSICAL SIGNS**, SUCH AS UNEXPLAINED SORENESS OR BRUISES AROUND GENITALS OR MOUTH, RASHES, BLEEDING, HAIR LOSS & BRUISES OR BITE MARKS TO BODY

2 NEW WORDS FOR **PRIVATE BODY PARTS** AND NO OBVIOUS SOURCE

3 RUNNING **AWAY** FROM HOME, FREQUENT SCHOOL ABSENCES, **ACTING OUT** IN SCHOOL, NOT WANTING TO PARTICIPATE IN PE, SPORTS AND SWIMMING

4 SUDDEN UNEXPLAINED **PERSONALITY CHANGES**: RAGE, INSECURITY, ANGER, DEPRESSION, AND ANXIETY

5 **NEW FEAR** OF CERTAIN PEOPLE OR PLACES, NOT WANTING TO BE ALONE WITH SOMEONE, EVEN A FAMILY MEMBER YOU KNOW & TRUST

6 BECOMING WITHDRAWN OR **VERY CLINGY**, EASILY DISTRACTED OR DISTANT AT TIMES

7 BECOMING **UNUSUALLY SECRETIVE**, TELLING LIES, REFUSING TO TALK ABOUT A SECRET THEY HAVE WITH AN OLDER CHILD OR ADULT

8 REGRESSING TO YOUNGER BEHAVIOURS LIKE BEDWETTING AND **THUMB SUCKING**

9 **NIGHTMARES** AND SLEEPING PROBLEMS

10 RESISTS REMOVING CLOTHES FOR **BATHING OR CHANGING CLOTHES**

11 **UNDERPANTS SOILING OR BLEEDING** UNRELATED TO TOILET TRAINING

12 PAIN DURING **URINATION OR BOWEL MOVEMENT**

13 CHANGES IN **EATING HABITS**. TROUBLE EATING OR SWALLOWING

14 **CHANGES IN CLOTHING**, DRESSING SHABBILY OR, IN SOME INSTANCES DRESSING PROVOCATIVELY

15 ACTING OUT IN AN **INAPPROPRIATE SEXUAL WAY** WITH TOYS OR OBJECTS, PLAYING SEXUAL GAMES

16 TALK OF A **NEW FRIEND**, AND UNEXPLAINED **MONEY OR GIFTS**

17 **SELF-HARM** CUTTING, BURNING OR OTHER HARMFUL ACTIVITIES

CALL FOR INFORMATION, ADVICE OR IF YOU JUST WANT TO TALK

Prevented
ed
ABUSE PREVENTION EDUCATION

IF YOU SUSPECT ABUSE CALL NSPCC HELPLINE

0800 800 5000

IF YOU'RE A CHILD & WANT HELP CALL CHILDLINE

0800 1111

NNECA
NATIONAL NETWORK TO END CHILD ABUSE

WWW.NNECA.ORG.UK
WWW.CHILDABUSEHELP.ORG.UK

